



## PAINTED CEILING OF GEOMETRIC PATTERN ON RATTAN

Private customers in Beijing

Materials : Yellow ochre, gold & nacre pigments.

Finition : Wax natural.

Size ceiling : 30 m2

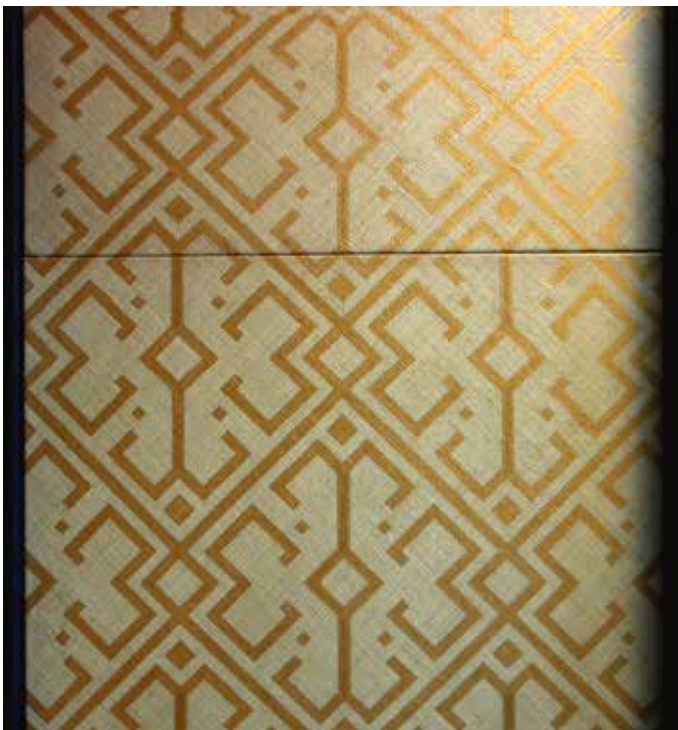


TOTAL CEILING  
30 M2



2825  
4861

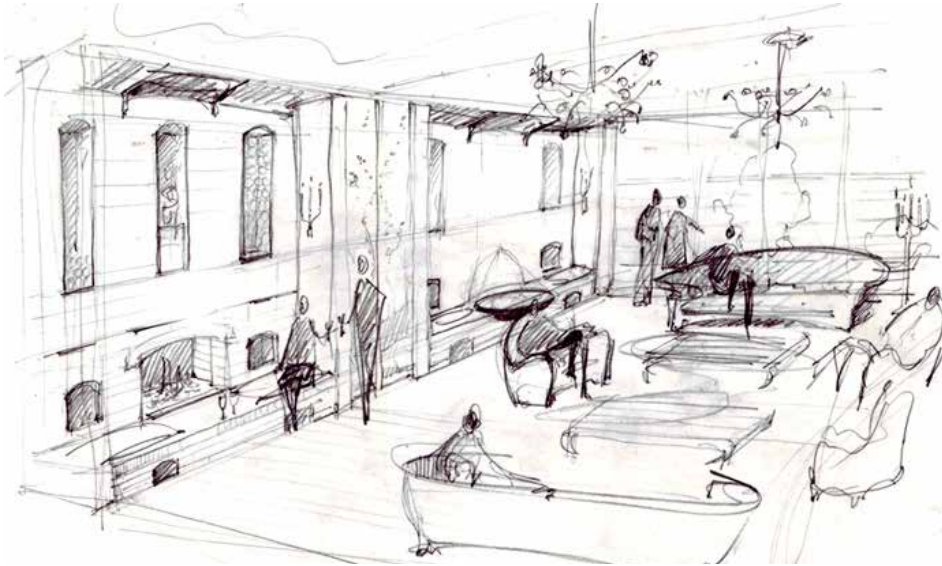
1453 1550 1550 1345 1540





## FOLDING SCREEN

Restaurant in Beijing built and designed by Gejianzhu Architects.  
Vine landscape for a screen on the both sides and two doors.  
Vine leaves in lacquer - wine grapes and trunks in eggshells.  
Size : Screen 3m x 5m - Doors 3m x 1m40





## FACADE

Restaurant in Beijing built and designed by Gejianzhu Architects.  
Vine landscape for a panels in a corridor and rooms.  
Vine leaves in lacquer - wine grapes and trunks in eggshells.  
Surface total 11 m<sup>2</sup> (12 panels x 1m x 0,90 m)





## FURNITURES

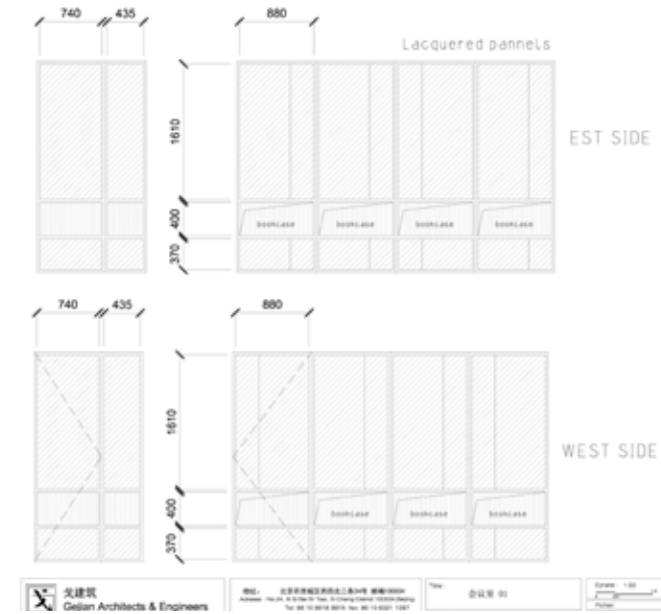
Restaurant in Beijing built and designed by Gejianzhu Architects.

Decoration on furnitures : wine grapes in eggshells



## BOOKCASES

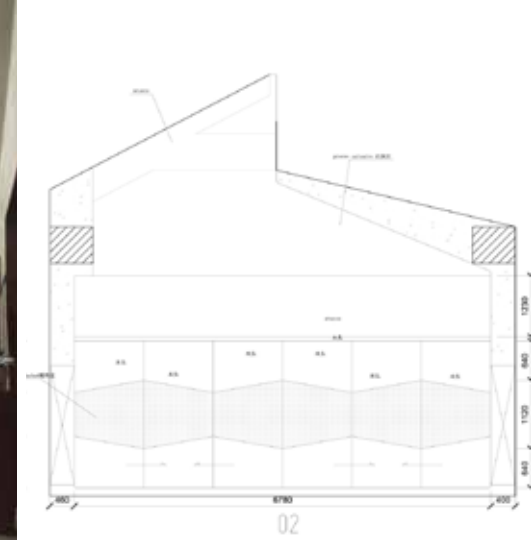
Office and interiors decorations in Tianjin was built and designed by Gejianzhu Architects.  
Lacquered pannels for two bookcases - Tint gold with silver effects.  
Size : 20 m2





## FOLDING SCREEN

Office and interiors decorations in Tianjin was built and designed by Gejianzhu Architects.  
Screen panels with Faux-shagreen - Tints White nacre  
Size : 3 x 2,10 m2 total : 6,30 m2

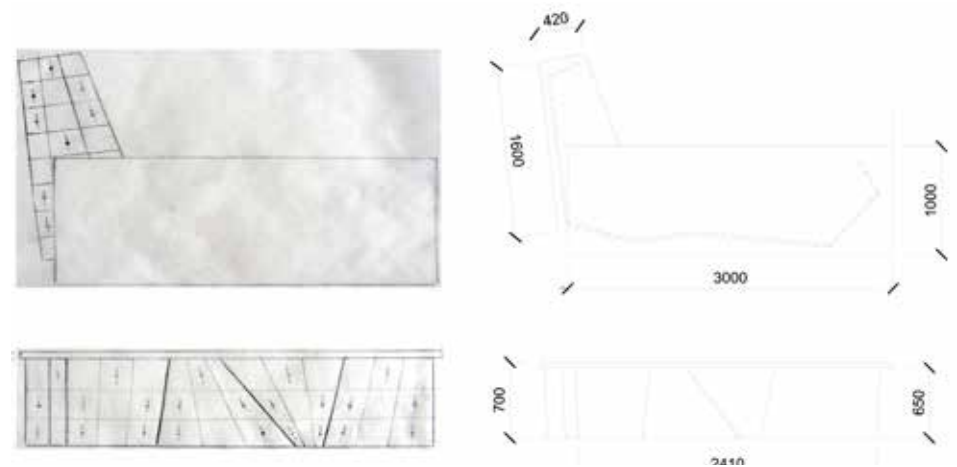


## FURNITURE

Office and interiors decorations in Tianjin was built and designed by Gejianzhu Architects.

Desk with Faux-shagreen - Tints White nacre

Surface total : 3 m2



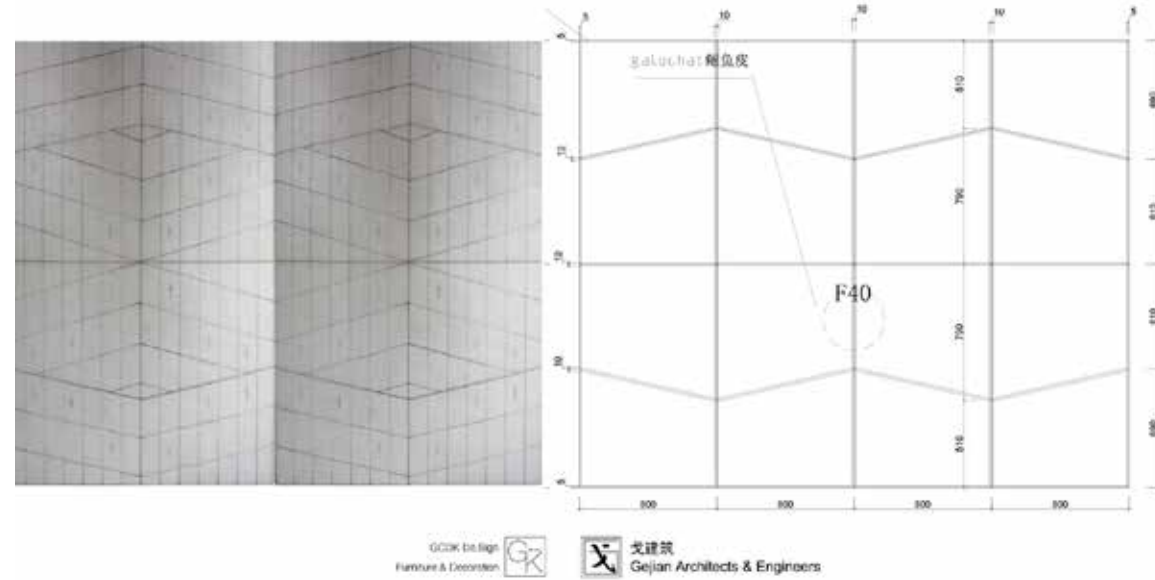


## SCREEN

Office and interiors decorations in Tianjin was built and designed by Gejianshu Architects.

Screen with Faux-shagreen - Tints White nacre

Surface total : 11,50 m2



## FURNITURE

Office and interiors decorations in Tianjin was built and designed by Gejianzhu Architects.

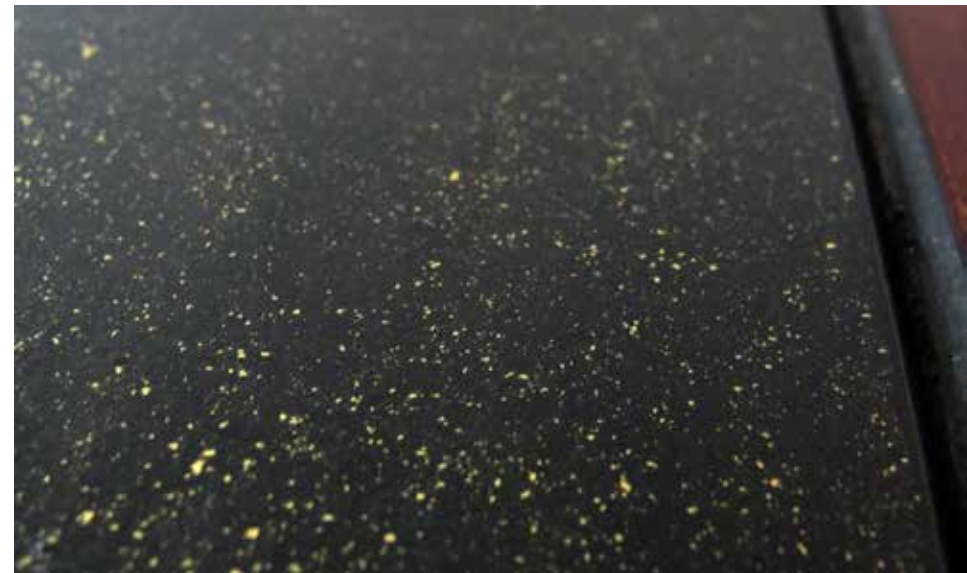
Furniture with Faux-shagreen -Surface total : 2,20 m2





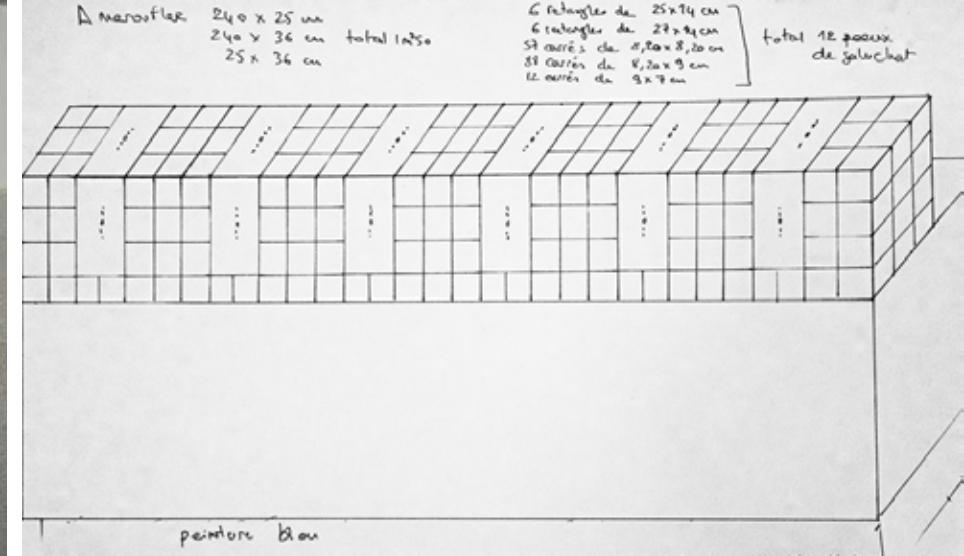
## FURNITURE

Office and interiors decorations in Tianjin was built and designed by Gejianzhu Architects.  
Furniture with lacquer -Surface total : 2,30 m2



## FURNITURE

Reception desk covered with faux-shagreen.  
Chamber of commerce & industry French-China of Beijing  
Tints with varnish and colors pigments - Finition in varnish  
Total Surface : 1,50 m2





## SCREEN

Office Bank - Shanghai - china

Screen covered in faux-shagreen and some part lacquered in eggshells inlays.

Total surface : 5,60 m2

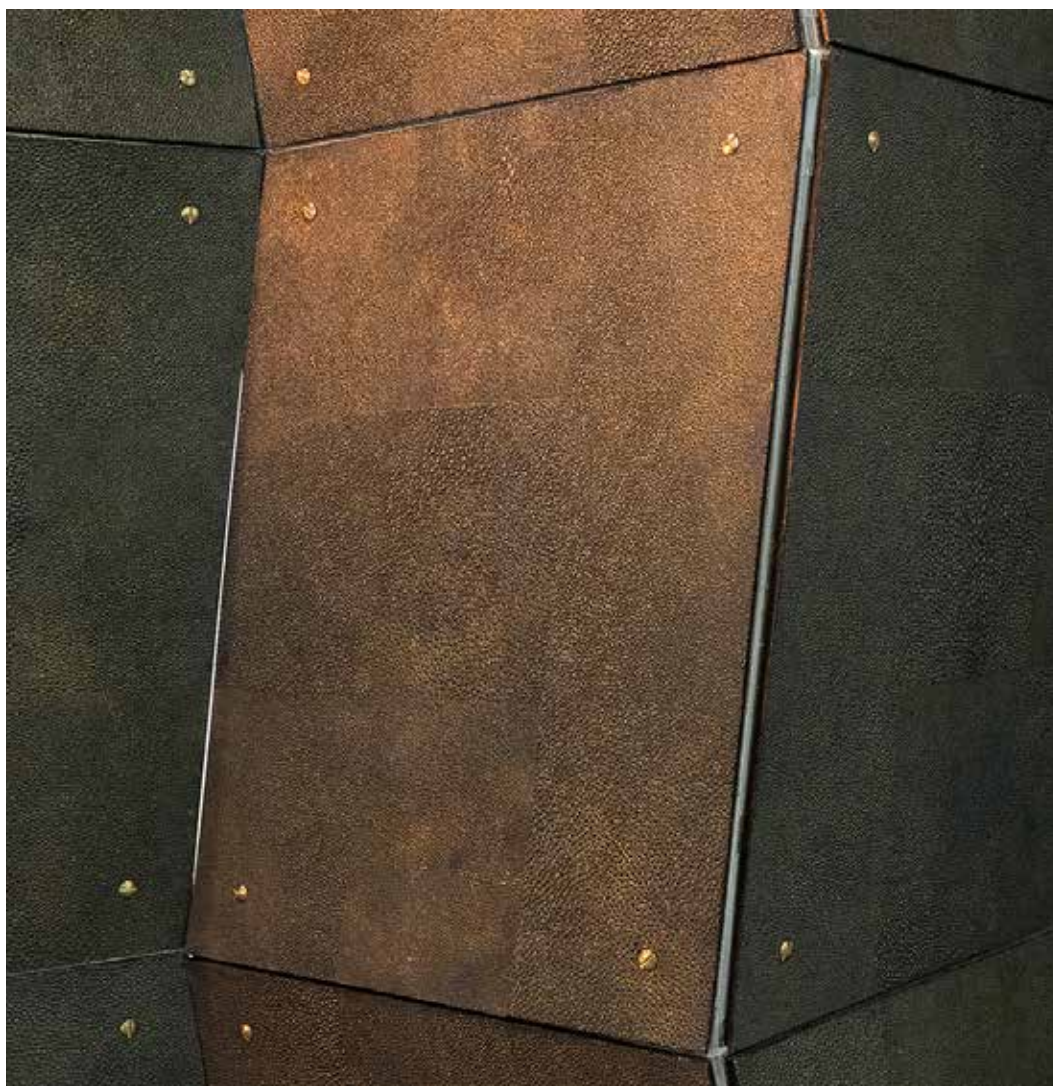




## SCREEN

Folding screen in faux-shagreen on both sides.

Size : 190 x 150 cm





## SCREEN

Screen, lacquered on both sides, with eggshell inlay.  
Size : 170 x 200 cm



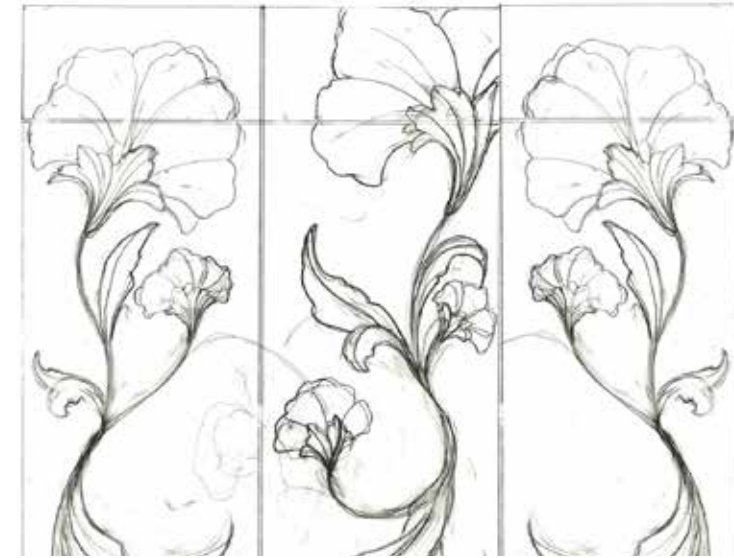


## SCREEN

Screen with a steel framework - White glasses - Mashrabiya -  
Faux-shagreen

Size : 190 x 180 cm

Collaboration with the workshop of stained glass Au Passeur de  
Lumière





## FURNITURE

Green celadon lacquer on the top and on the front of drawers and doors  
Green celadon leather on the top. News inox pulls.



## FURNITURE

Sides lacquered with eggshells inlays representing the leaves of gingko biloba.  
Size of sides : 140 x 10 cm





gcdkdesign@hotmail.com

ID wechat : gwendeker

www.gcdkdesign.com



CHINA - BEIJING

DONGCHENG DIST. 100007 CAOYUAN HUTONG 76

中国 北京 东城区 100007 草园胡同 76

B号楼第05层505

FRANCE - PARIS

16 RUE DE LA FORGE ROYALE, 75011